

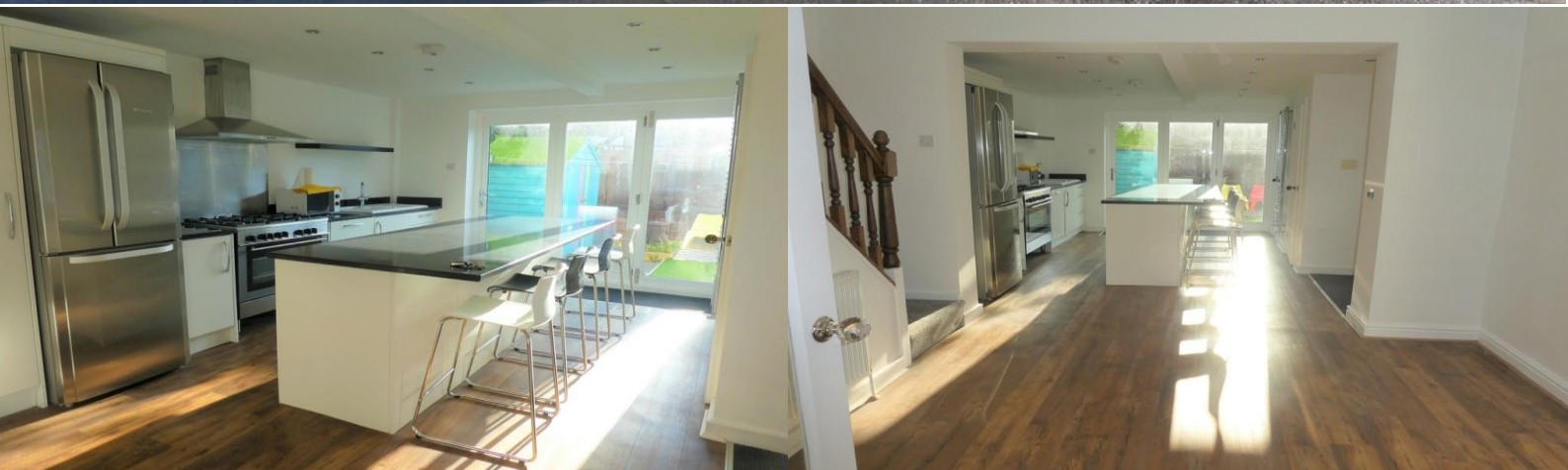


THOMLINSONS

— 1870 —

36 Grove Park Terrace, Harrogate, HG1 4BW

£345,000



NO ONWARD CHAIN | CLOSE TO CENTRE | THREE BEDROOMS | ATTIC ROOM | SPACIOUS & MODERN

****NO ONWARD CHAIN**** An exceptionally spacious, stone built, end terrace property, situated in this popular residential location close to local amenities and within easy reach of the Harrogate town centre with accommodation as follows; Dining Kitchen, Cloakroom, Lounge, Master Bedroom with En-Suite, Two Further Bedrooms, Bathroom, Attic Room.

Enclosed Garden On Street Parking.



01937582748 | www.thomlinsons.co.uk

